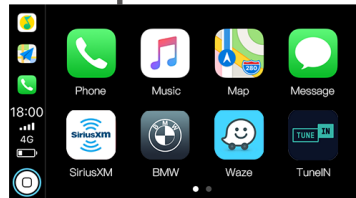


iSmart auto Wireless CarPlay

Factory direct sales ·
Non-destructive installation ·
Original car upgrade ·
Continuous upgrade service ·

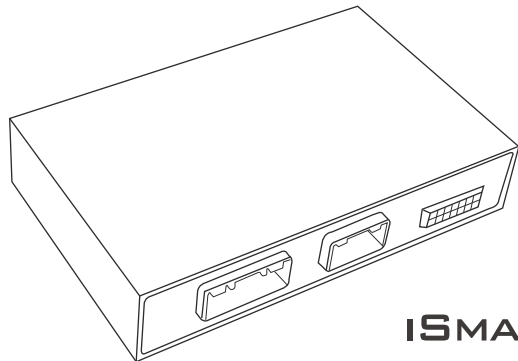


www.sigmacarstereo.com

iSmart auto Wireless CarPlay & Android Auto Smart Module

Product Manual For BMW CCC

Factory direct sales · Non-destructive installation · Original car upgrade · Continuous upgrade service



iSMART AUTO BOX

Wireless CarPlay Smart Module

1. Packing List



① iSmart CarPlay Main Box



② Main harness



③ LVDS Out Cable



④ LVDS IN Cable



⑤ Antenna Cable



⑥ Microphone Cable

2. Function introduction



CarPlay



CarLife



AndroidAuto



Front/Rear/360



Mirroring



AHD HD video protocol



USB video



DSP Power amplifier chip

• CarPlay

The iPhone's built-in car-machine interaction system works with the central control knob button to operate the voice control phone, information, navigation, music and Siri voice interaction for more information; supports wireless and wired connections to CarPlay

• CarLife

The car and machine care system developed by Baidu, supports the connection of iPhone and Android devices, voice control of telephone, information, navigation, and music; built-in "Xiaodu" voice control system, supports wireless and wired connections

• AndroidAuto

The original ecological Android car-machine interaction system developed by Google, voice control phone, information, navigation, music built-in voice control system;

• Front/Rear/360

The intelligent module can decode video, and can be equipped with front view, rear view (support display intelligent dynamic trajectory and radar), right view and 360 panoramic view

• Mirroring

Supports wired and wireless screen projection for iPhone and Android phones

• AHD HD video protocol

Added AHD HD rear view/360 video output interface

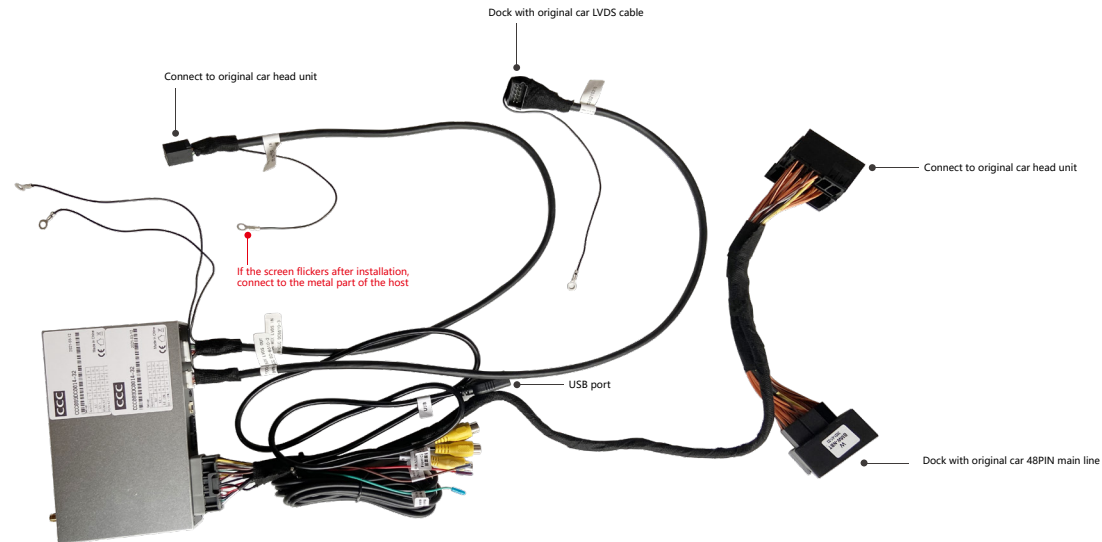
• USB video

Automatic media playback function, can directly insert U disk to play audio and video media

• DSP Power amplifier chip

Add DSP power amplifier chip to improve sound quality

3. Connection Diagram



Before performing any operations on the CarPlay box, you need to unplug the CarPlay 48PIN plug from the back of the original car head unit

4. Main Parameters & Specifications

Operating voltage: 9-16V, 14.4V (rated)	Storage temperature: -30~+85°C
Operating temperature: -30~+75°C	Ambient humidity: ≤98% (at45°C) , 65±5% (rated)
Power consumption current: 1A (rated) , 3A (Max)	Shutdown current: Current: 300mA (Clock is on)
Quiescent current: less than 3mA	
Charging current: ≤2A, when the USB charging current >1A, the host machine should activate the circuit protect function to control the current within 1.5A and avoid products burning	

5. Warranty Terms

Dear user:

Thank you for using our products. In order to makesure customers receive product is good, all our products have been strictly tested in our factory before delivery. And all our products enjoy 1 year warranty.

But following conditions are not covered by warranty:

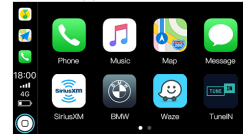
1. Warranty period over; the apperance with scratches dirt, deformation.
2. Information on Warranty car and purchase bill inconsistent with product, or modified.
3. There is no bar code or bar code not clearly on host unit.
4. Damage caused by using, disassembling or refitting product not follow the instruction properly.
5. Not our company authorized personnel disassemble. repair or refit to cause human made damage.
6. The product damaged by improper transport or improper use.
7. Damage due to irresistible factors (such as fire, flood, traffic mattersTherefore, lightning, earthquakes, etc.).

6. Interface introduction

Music: Play local music in USB, formats include: MP3, WMA, AAC, AC3, DTS, OGG, FLAC, APE, AMR.



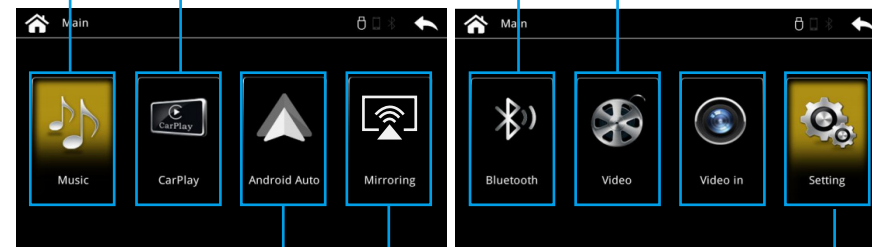
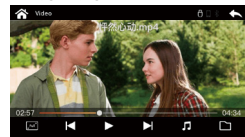
CarPlay: Support iPhone wired and wireless CarPlay connection (The connection method can be set by yourself)



Bluetooth: You can view the Bluetooth name and pairing code in this interface



Video: Play local video in USB, the format includes: mkv, mp4, avi, wmv, rmvb, rmpmpg, mpeg, ts, dat, asf, flv, vob.



Android Auto: Support Android Auto connection of Android phones

CarLife: Support Android mobile phone wired and wireless CarLife connection (connection method can be set by yourself)



Mirroring: Support mirrored screen projection for iPhone & Android phones



Setting: System setting interface, setting entrance of system functions

Note: To use CarLife or Android Auto, you need to enter the system setting selection

7. Installation Process

Tools you need to prepare

- 1 * panel remover
- 1 * T20 screwdriver
- 1 * T10 screwdriver (some car models need it to dis-assemble the glovebox)
- Tape and towel-protect the trim and panel, collect harness

Remark : Make Sure Car Engine Off Before The Installation. Open/Close The Driver Side Door ONCE, Wait Centre Screen Turns Black First unplug the 48Pin power cord of the original car head unit, and then install the video cable and all other cables

Please adjust the DIP switch according to the current screen size



DIP Switch:

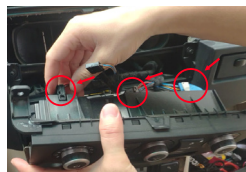
6.5"	HLHLH
6.5" +	HHHLH
8.8"	HLHHH
8.8" +	HHHHH



1. Remove the air-conditional panels and trim via plastic panel remover. (Note to disconnect the connector behind the panel)



2. Unscrew the 2 screws on control panel.



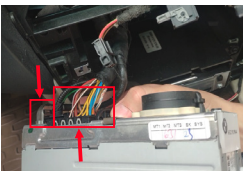
3. Remove the control panels. (Note to disconnect the connector behind the panel)



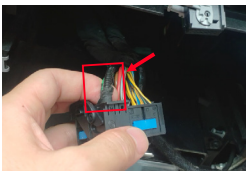
4. Take of the trim panel at bottom, note the connectors at 2 side



5. Unscrew the 2 screws on head unit.



6. Take out the head unit, and unplug the 48PIN harness and LVDS cable of the head unit.



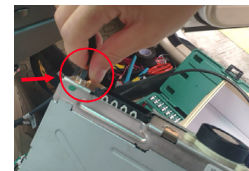
7. Be note to unplug the fiber cable from 48PIN connector if there is fiber cable there



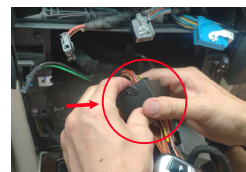
8. Insert the LVDS IN and LVDS OUT in the port of LVDS box



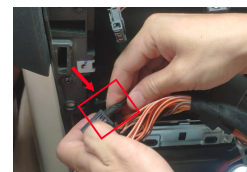
9. Insert the original car LVDS cable into LVDS box



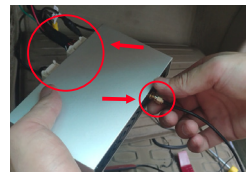
10. Insert another side of iSmart auto box LVDS IN cable into head unit.



11. Connect the iSmart auto box 48PIN harness female side with original car 48PIN harness



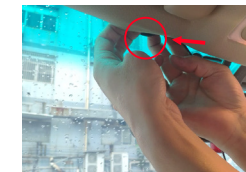
12. Insert the fiber cable into iSmart auto box 48PIN harness



13. Insert the white power cable and LVDS cable into main box. Connect the WIFI antenna and microphone cable.



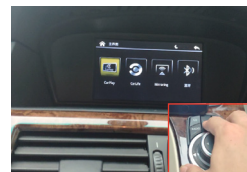
14. After the installation is complete, Insert the male side of the iSmart auto box 48PIN harness into head unit.



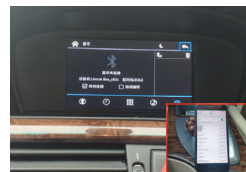
15. iSmart auto microphone was recommended to put in front of rear mirror area and hide the microphone cable



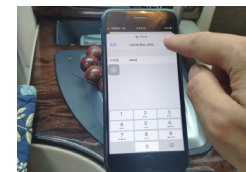
16 At original car system--choose media —external audio



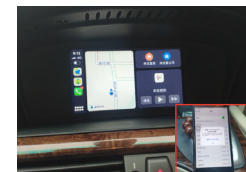
17. Long press MENU at this interface to switch to carplay interface



18. Keep phone WIFI ON, Open phone Bluetooth and searching. (Find the Bluetooth name and pairing code of iSmart box)



19. Insert pairing code



20. Click USE Carplay on your phone side. Orit will keep at searching interface.

If the screen flashes during use, you need to perform the following steps to install

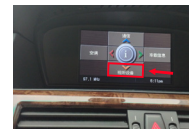


1. Prepare a wire and connect one end to the original car LVDS cable on the LVDS box



2. The other end is connected to the metal part of the original car head unit

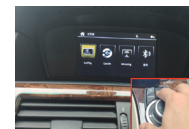
Voice Setting



1. At original car system--choose media



2. Choose external audio.

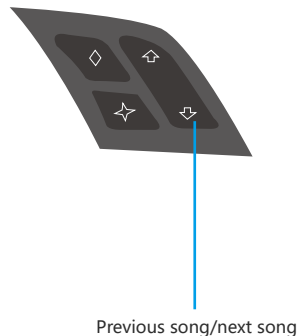
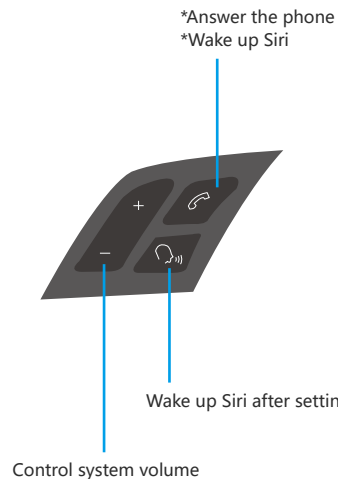


3. Long press MENU at this interface to switch to carplay interface

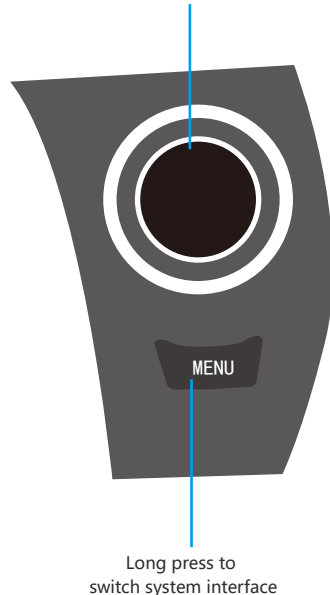


4. Enjoy wireless Carplay after connect your phone.

8. Button description



Knob control system APP



9. Wireless CarPlay Connection Method



1. Long press the MENU button of the original car to switch to the CarPlay main system interface, find the Bluetooth function option and click to enter



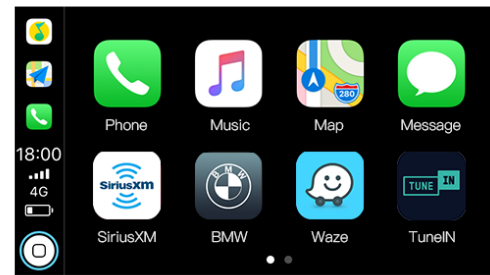
2. Check the Bluetooth name of CarPlay on the "Bluetooth" system interface



3. Turn on the phone WiFi and keep it turned on, then enter the phone Bluetooth interface, click and connect CarPlay Bluetooth



4. Click on the Bluetooth name beginning with the link "Limcet-Box-", a pairing request will pop up, just click on pairing; after the Bluetooth pairing is successful, the phone will pop up a request to enable the carplay option, click on confirm.



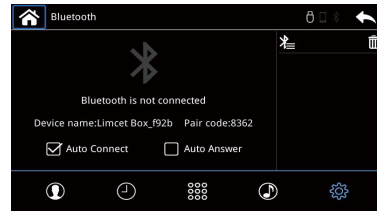
5. CarPlay connection is successful, you can use wireless CarPlay

10. Android auto Connect Method

Before connecting to use Android Auto, you need to download and install Android Auto App on your phone in advance



1. Long press the MENU button of the original car to switch to the "CarPlay" main system interface, find the "Bluetooth" function option and click to enter



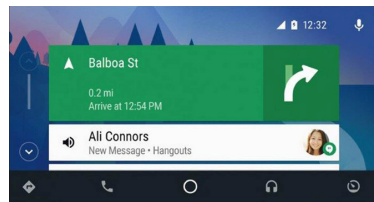
2. In the Bluetooth interface of CarPlay, you can view the Bluetooth name and pairing code of CarPlay; check Auto Connect, the next time you get in the car, the Bluetooth of the phone will automatically connect



3. Turn on the phone WiFi and keep it turned on, then enter the phone Bluetooth interface, click and connect CarPlay Bluetooth

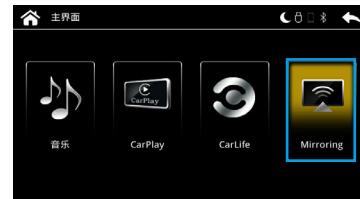


4. Click on the Bluetooth name beginning with the link "Limcet-Box-", a pairing request will pop up, just click on pairing;



3. After the Bluetooth connection is successful, it will automatically connect to Android Auto. After entering the Android auto page, the system supports the original car touch or knob and other corresponding buttons to seamlessly operate the Android auto page APP

11. iPhone Wireless Mirroring



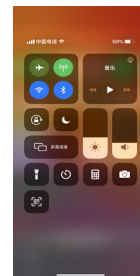
1. Long press the MENU button of the original car to switch to the "carplay" main system interface, find the "Mirroring" function option and click to enter



2. Select iPhone option in Mirroring function



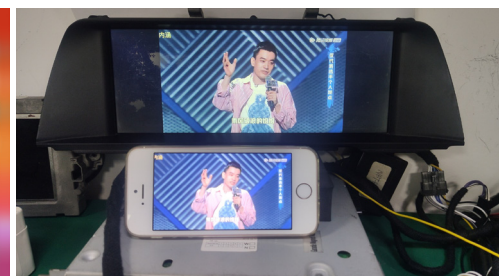
3. Take out the iPhone, find the "Wireless LAN" function option and enter; open the "Wireless LAN" function option, then the carplay-wifi name will appear in the search bar and click on this wifi, the password is 88888888



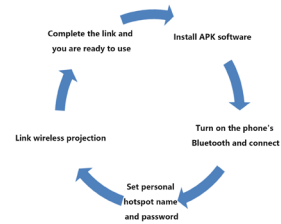
4. After the carplay wifi connection is successful, the phone returns to the main interface, opens the shortcut menu bar, selects "Screen mirroring" and opens



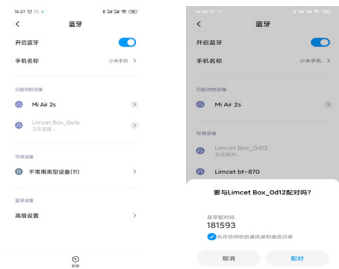
5. After the mobile phone "Screen mirroring" is turned on, select "Mirroring" to complete the wireless projection



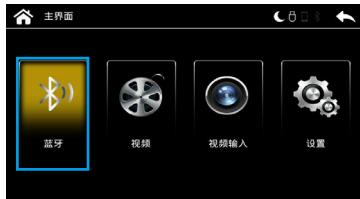
12. Android Wireless Mirroring



1. To use Android wireless mirroring, you need to download a "MLink" software first, and you can obtain the "Android wireless APK software" from the dealer



4. Take out the Android phone, find the "Bluetooth" function option, and find the name starting with "Limcet-Box-" in the Bluetooth search bar, click connect; click the link "Limcet-Box-" starting with the Bluetooth name, a pairing request will pop up, click pairing



2. Long press the MENU button of the original car to switch to the main system interface of "CarPlay", find the "Bluetooth" function option and click to enter



5. Long press the MENU button of the original car to switch to the main system interface of "CarPlay", find the "Mirroring" function option and click to enter



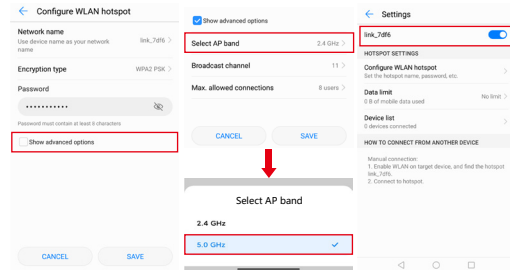
3. Check the Bluetooth name on the "Bluetooth" system interface



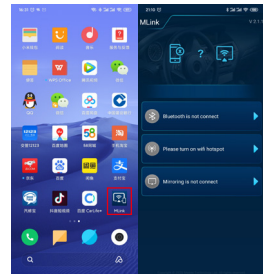
6. Select the "Mirroring" function option and adjust it to "Android" to prompt the phone to establish a mobile hotspot for communication. The hotspot name and password are displayed in the lower left corner of the connection interface



7. Enter the phone settings function and find "Personal Hotspot";



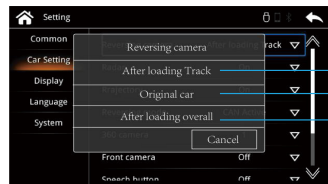
8. Set the name and password of "Personal Hotspot" to be consistent with the name and password prompted on the "Mirroring" interface. Select "5.0 GHz Band" for the hotspot AP band; (If there is no such option, check the "Show advanced options" first) Then save the setting and turn on the "Personal Hotspot" switch



9. Return to the main interface of the phone and open "MLink" to use wireless mirroring

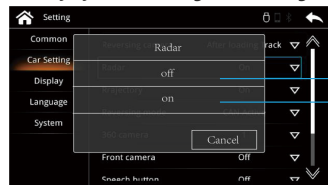
13. Camera settings

CarPlay System - Setting - Car Setting - Reversing camera



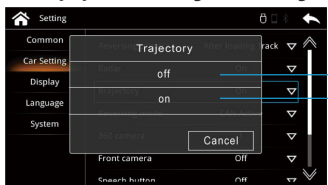
- Please select this if you install a camera
- Please select this if the original car with a camera
- Please select this if you install 360 camera

CarPlay System - Setting - Car Setting- Radar



- The radar is not displayed on the interface of the camera select this option
- The radar is displayed on the interface of the camera select this option

CarPlay System - Setting - Car Setting - Trajectory



- If the camera interface does not display dynamic track, select this option
- If the camera interface display dynamic track, select this option

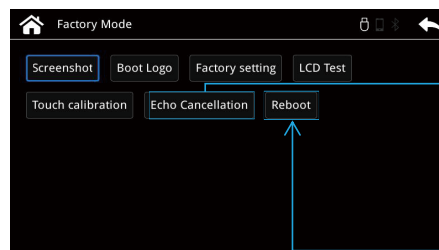
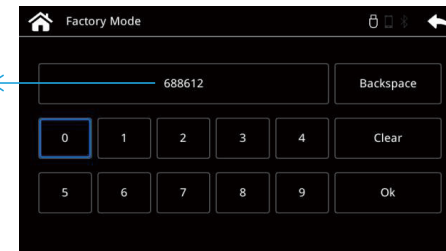
14. Echo cancellation

CarPlay System - Setting - System



Enter the password "688612"
Click "OK" to enter factory mode

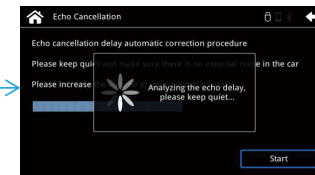
Enter Factory Mode



Call echo cancellation button,
if the call has echo,
please enter this button to
perform echo correction

Analyzing the echo delay finished,
accuracy:91%!
Analysis failed, please try again!

After the steps are completed in sequence,
click the button to return to the left interface
Click the "Reboot" button to restart the system,
wait for the system restart to complete,
the selected settings take effect

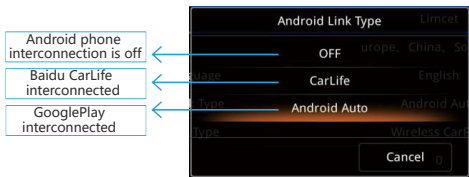
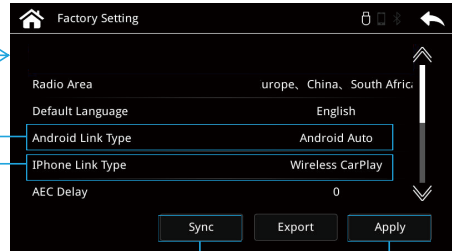
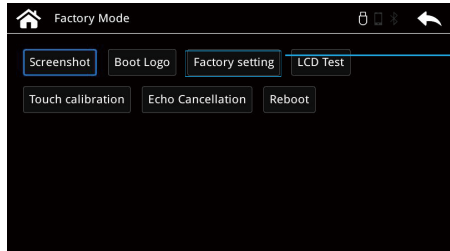


- When correcting the echo, you must keep:**
1. The environment in the car is quiet;
 2. The sound channel must be set to the AUX channel that the system can recognize;
 3. Turn the volume to a moderate position, then click "Start" to start echo correction,

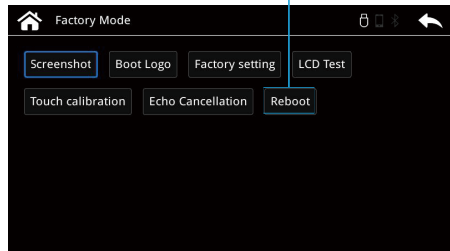
The larger the final correction value, the better, as shown on the left

15. iPhone / Android Phone Setting

CarPlay System - Setting - System - Factory mode - Factory setting



After the setting is complete, you need to click Apply-Sync, and then return to the interface below, click Reboot to restart the system, and wait for the system to restart, the selected settings will take effect



www.sigmacarstereo.com